
PROJECT NAME:

Arndale Centre - Various

CLIENT:

Arndale Centre

LOCATION:

Manchester

M&E ORDER VALUE:

£100,000 - £1.5m

Dodd Group has carried out numerous projects at the Arndale shopping centre, located in heart of Manchester city centre. Comprising 1.8 million sq ft of retail and F&B space, the Arndale centre receives 40 million annual visitors and therefore all works that we have carried out have had to take place whilst the shopping centre was fully open, causing minimum disruption to the occupiers and customers through close liaison with the Arndale Estates Department.

Schemes that we have completed include:

Roof Top Air Handling Unit Replacement Scheme (£750,000)

This project entailed the removal of 9no existing roof-top Air Handling Units and replacement with new. The units served landlord retail space, mall areas and the Arndale House tower block all within the Arndale shopping centre. Lifts were carried out on Sunday evenings through to early hours Monday morning to ensure the shopping centre remained operational throughout the contract period.

The supply, installation, testing and commissioning of a **new main LV panel** situated adjacent to the existing LV within Core 5 substation. (£200,000) Tasks include delivery and assemble of the new LV panel, the installation of a new galvanized containment system, liaising with ENWL installing new supplies from existing transformers and relocating existing HV meters. Accommodating the servicing of the existing ENW substation under the sites COMA agreement.

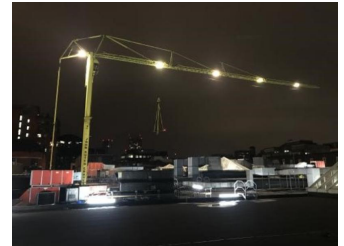
Boiler replacement scheme (£1.5M) The project comprised of the replacement of 5no. Existing HTHW boilers that served the Arndale Shopping Centre. The boiler house area is situated in the basement level of the shopping centre. Major plant movement activities were organised to remove the existing equipment and position the new, which required strategic planning with the Arndale Management Team and Tenants to arrange the necessary logistics.

Cooling Tower Replacement Scheme (£800,000)

The project comprised of the replacement of 4no. existing cooling towers that served the entire retail space within the Arndale Shopping Centre.

The equipment compound area is situated on the roof level of the upper mall. Major crane lifts were organised to remove the existing equipment and position the new, which required strategic planning with Manchester City Council to arrange the necessary road closures for Market Street in the centre of Manchester.

New main LV panel situated adjacent to the existing LV panel



within Core 18 substation. (£100,000)

Dodd Group assembled the new LV panel, installed a new galvanized containment system and appointed ENW to provide a new MOD156 supply. We assisted in liaising with key stakeholders in the ordering of a new shipper meter for the utility supply.

The new panel was supplied via a temporary source whilst the existing loads were mitigated prior to the final mains changeover and removal of the existing panel. The new switchgear was designed to fully integrate with the sites existing EP&T remote metering system.

We maintained continual communication with the Arndale Management and stakeholders to carefully and methodically plan the changeover and cable migrations works carried out during night works to ensure the shopping centre remained fully operational during opening hours.

